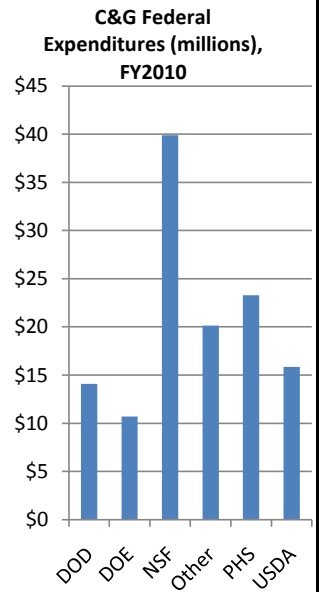


5-Year Historical Trends

Revenues	2006-07	2007-08	2008-09	2009-10	Preliminary 2010-11	% Change
Tuition & Fees	\$149,148,767	\$164,451,205	\$162,119,262	\$170,813,363	\$197,091,556	32%
Federal Appropriations	25,808,162	22,231,598	23,156,605	18,480,582	16,842,963	-35%
State Appropriations	430,923,173	487,744,042	463,006,106	491,930,674	499,074,516	16%
Gov't Contracts & Grant	148,677,644	149,699,250	176,757,767	194,856,618	215,255,331	45%
Private C&G & Gifts	97,135,550	103,401,526	106,378,297	97,510,604	113,379,531	17%
Sales & Services	154,221,030	164,334,298	168,977,142	168,927,911	176,900,080	15%
Other Sources	35,032,044	6,505,771	(6,703,779)	33,036,674	36,399,892	4%
Total Revenues	\$1,040,946,370	\$1,098,367,690	\$1,093,691,400	\$1,175,556,426	\$1,254,943,868	21%



Contracts & Grants

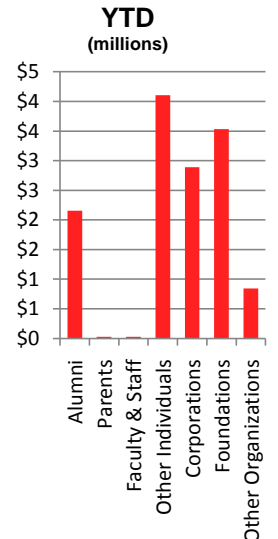
Sponsors	2006-07	2007-08	2008-09	2009-10	2010-11	% Change
Federal	\$100,296,497	\$100,609,855	\$104,984,038	\$114,379,642	\$123,942,227	24%
State	37,682,956	38,356,350	37,787,784	34,079,694	38,809,353	3%
Other	72,580,100	56,426,133	52,896,723	55,129,430	64,061,996	-12%
Total	\$210,559,553	\$195,392,338	\$195,668,545	\$203,588,766	\$226,813,576	8%
Amount of F&A in Total	\$29,382,014	\$29,539,786	\$30,091,263	\$33,752,158	\$38,621,883	31%

Source: Finance & Business

Development and Gift Activity

(as of August 31)	New Endowment Activity	Gifts (includes Endowment)	New Commitments	YTD 2012 Totals	YTD 2011 Totals	YTD Period % Change	Year End 2011 Totals
Agriculture and Life Sciences	72,234	1,920,814	144,061	2,064,875	3,886,942	-47%	23,990,556
Design	100	11,187	250	11,437	8,892	29%	1,184,271
Education	0	87,012	0	87,012	373,271	-77%	927,872
Engineering	92,229	1,445,666	26,100	1,471,766	1,140,101	29%	10,251,142
Humanities & Social Sciences	70,630	34,659	50,000	84,659	102,827	-18%	1,165,396
Poole College of Management	130,000	198,992	135,000	333,992	122,498	173%	25,182,136
Natural Resources	21,692	123,052	40,625	163,677	120,299	36%	1,972,865
Physical & Mathematical Sciences	12,231	134,125	106,685	240,810	336,764	-28%	4,500,674
Textiles	1,590	32,440	2,000	34,440	62,777	-45%	1,211,701
Veterinary Medicine	3,849,524	335,266	3,808,007	4,143,273	990,962	318%	9,417,576
Alumni Association	222,230	12,183	221,000	233,183	18,313	1173%	536,596
ARTS NC State	2,248	43,872	76,400	120,272	42,728	181%	2,284,124
Graduate School	0	210	0	210	1,200	-83%	8,120
Libraries	7,775	34,833	1,775	36,608	61,425	-40%	2,320,474
University-wide	65,475	2,819,717	89,500	2,909,217	3,143,358	-7%	11,143,131
Sub Total	4,547,958	7,234,027	4,701,403	11,935,430	10,412,360	15%	96,096,634
Athletics	141,924	1,244,057	406,510	1,650,567	792,835	108%	10,756,698
Total	4,689,882	8,478,084	5,107,913	13,585,997	11,205,195	21%	106,853,332

Sources of Gifts



Source: Advancement Services

Gifts includes cash, matching gifts, and gifts-in-kind. New Commitments includes bequest expectancies and pledges.

Sponsored Program Activity, Awards and Proposals

	Awarded Projects, YTD through August			Proposed Projects, YTD through August			Contracts & Grants Expenditures		
	YTD 2010	YTD 2011	5-year Avg	YTD 2010	YTD 2011	5-year Avg	8/31/2010	8/31/2011	Year-end 2011
Chancellor	0	180,000	49,000	1,744,102	0	451,074	105,179	125,820	615,340
Agriculture & Life Sciences	16,622,109	17,697,793	13,256,494	104,247,817	35,954,104	47,669,451	9,772,835	10,223,968	54,676,506
Design	144,274	18,846	130,249	2,240,141	208,165	1,018,150	91,371	194,042	632,756
Education	4,296,004	5,535,292	2,925,260	2,106,851	2,374,643	2,863,421	1,035,038	1,780,034	6,182,246
Engineering	23,097,758	19,581,853	18,695,897	50,120,054	58,677,635	52,193,808	12,274,999	12,713,051	65,833,722
Humanities & Social Sciences	1,433,958	1,529,423	1,356,257	1,469,293	2,883,927	1,514,117	741,029	831,196	4,411,062
Poole College of Management	709,378	327,281	234,969	446,329	409,017	338,045	205,363	284,081	1,066,759
Natural Resources	3,200,963	4,259,435	3,242,746	15,475,746	4,259,010	6,413,166	1,492,496	1,476,494	9,360,296
Physical & Mathematical Sciences	8,348,412	7,701,796	7,399,840	35,684,200	40,421,927	25,271,769	6,842,619	6,552,062	28,094,937
Textiles	2,444,830	539,623	1,194,331	806,307	2,098,916	4,993,375	1,194,783	1,660,350	5,910,817
Veterinary Medicine	2,499,118	3,555,313	2,736,870	6,469,066	3,231,561	4,849,565	2,397,757	1,612,638	12,430,334
Extension & Engagement	116,874	61,594	37,831	1,098,205	637,536	732,087	1,389,419	1,532,272	8,205,844
Finance & Business	525,442	50,000	124,103	475,488	99,379	1,979,613	6,108	7,112	45,338
International Affairs	0	19,103	49,115	0	19,103	45,347	3,984	21,322	327,607
Information Technology	0	0	0	0	0	126,898	90,980	152,585	1,037,677
Provost	122,597	573,486	307,015	100,450	268,353	118,192	3,083	4,424	9,944
Research & Graduate Studies	6,815,058	5,212,253	4,730,796	10,540,860	7,528,213	6,534,543	2,508,026	3,630,832	18,605,667
Student Affairs	1,101,902	374,729	718,833	889,402	374,729	736,922	232,825	290,383	1,068,218
Undergraduate Affairs	0	0	0	0	0	0	89	60,291	85,230
Other	0	0	0	0	0	0	555,924	986,851	8,168,856
Totals:	71,478,677	67,217,820	57,189,607	233,914,311	159,446,218	157,849,542	40,943,908	44,139,806	226,769,158

Source: Awards and proposals from Sponsored Programs and Regulatory Compliance Services (SPARCS)

Source: Year-to-date and year-end C&G expenditures from Office of Contracts and Grants

Faculty Population Definitions

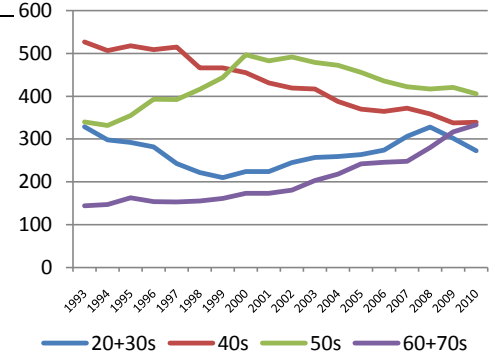
Faculty in this report are defined as employees with a JCAT in the 2xx range in the HR system. They may be permanent, temporary, or fixed-term. Permanent faculty are those who receive benefits, including retirement, and whose purpose is instruction, research, and/or service. Population for average salary reports is defined by AAUP and includes only full-time faculty employees (not positions). Source of this data is AAUP. Data are taken from Personnel Data File as submitted to UNC-General Administration, as of September 30th of each year.

Faculty Census - Fall 2010				Tenured / Tenure-Track Faculty Gender Composition					
By Headcount	All	Full Time	Part Time	Total N	Female N	Male N	Female %	Male %	
Tenured	1,047	1,026	21	1996	1,330	217	1,113	16.3	83.7
On Tenure-Track	304	303	1	1997	1,298	213	1,085	16.4	83.6
Non-Tenure-Track	722	426	296	1998	1,257	210	1,047	16.7	83.3
TOTAL	2,073	1,755	318	1999	1,273	218	1,055	17.1	82.9
				2000	1,332	251	1,081	18.8	81.2
				2001	1,308	262	1,046	20.0	80.0
				2002	1,333	270	1,063	20.3	79.7
				2003	1,352	289	1,063	21.4	78.6
				2004	1,334	290	1,044	21.7	78.3
				2005	1,329	291	1,038	21.9	78.1
				2006	1,314	302	1,012	23.0	77.0
				2007	1,338	332	1,006	24.8	75.2
				2008	1,373	337	1,036	24.5	75.5
				2009	1,369	345	1,024	25.2	74.8
				2010	1,351	342	1,009	25.3	74.7

By FTE	All	Full Time	Part Time
Tenured	1,039.3	1,026	13.3
On Tenure-Track	303.5	303	0.5
Non-Tenure-Track	561.6	426	135.6
TOTAL	1,904.4	1,755	149.4

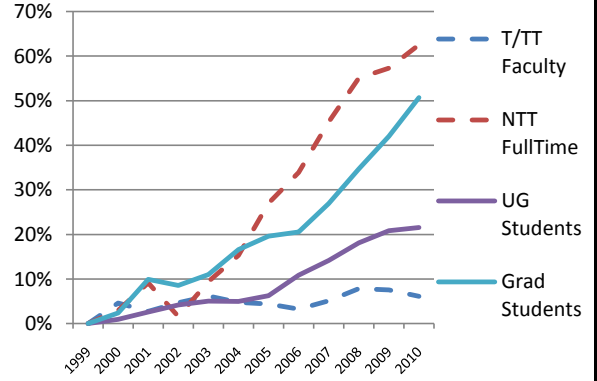
Includes: Permanent, temporary, visiting, and faculty on leave with pay.

T / TT Faculty Age Chart



Faculty and Student Cumulative Change from 1999

Year	All Faculty	Tenured / TT	Non-TT Full time	Non-TT Part time	Fall UG Students	Fall Graduate Students	Change T/TT Faculty	Change NTT Full Time	Change NTT Part Time	Change UG Students	Change Graduate Students
1999	1,809	1,273	307	229	19,337	5,376	0%	0%	0%	0%	0%
2000	1,917	1,332	316	269	19,524	5,505	5%	3%	17%	1%	2%
2001	1,936	1,308	335	293	19,839	5,910	3%	9%	28%	3%	10%
2002	1,913	1,333	312	268	20,146	5,838	5%	2%	17%	4%	9%
2003	1,964	1,352	336	276	20,314	5,966	6%	9%	21%	5%	11%
2004	1,974	1,334	354	286	20,302	6,270	5%	15%	25%	5%	17%
2005	2,010	1,329	390	291	20,546	6,430	4%	27%	27%	6%	20%
2006	2,030	1,314	411	305	21,438	6,480	3%	34%	33%	11%	21%
2007	2,090	1,338	446	306	22,070	6,824	5%	45%	34%	14%	27%
2008	2,132	1,373	476	283	22,839	7,242	8%	55%	24%	18%	35%
2009	2,078	1,369	483	226	23,361	7,636	8%	57%	-1%	21%	42%
2010	2,073	1,351	499	223	23,500	8,101	6%	63%	-3%	22%	51%



Enrollment is degree-seeking students, no NDS. UG includes AGI. Graduate = MR + DR + DVM.

Total SCH per Faculty FTE

	2000	2001	2002	2003	2004	2005	2006	2007	2008	2009	2010	2011
COM	805	732	768	763	749	751	739	738	773	761	755	749
PAMS	615	635	649	674	655	660	669	706	688	713	699	697
CHASS	544	551	525	553	548	557	548	561	545	529	591	587
Stu Aff	504	494	501	509	540	513	508	408	442	461	511	490
UnivTot	380	374	387	393	391	390	385	401	398	402	418	427
COE	411	407	435	423	407	381	359	382	367	367	386	404
Textiles	321	283	268	245	253	234	284	347	382	419	389	400
Design	383	388	383	353	357	328	313	310	317	338	362	373
CED	201	231	317	323	326	311	319	320	314	299	346	350
CALS	181	170	175	185	193	201	196	213	221	225	234	253
CNR	162	158	186	182	177	179	180	184	183	199	207	237
CVM	108	111	111	110	110	106	107	106	102	105	101	104

2010-11 Average Faculty Salary (\$ thousands)

Peer	Professor	Associate Professor	Assistant Professor	All Ranks
Cornell University	157.8	109.3	96.5	122.8
Georgia Tech	140.4	94.0	85.8	112.9
Univ Maryland-College Park	134.4	94.5	82.4	102.7
Univ Illinois-Urbana Champaign	133.5	84.8	80.3	103.5
Penn State University	133.5	89.0	75.9	90.1
Ohio State University	131.5	87.7	79.4	105.5
Michigan State University	125.2	87.0	69.1	94.5
Univ California-Davis	123.8	84.7	78.7	104.5
Univ Minnesota	123.2	85.1	78.5	92.4
Univ Florida	122.1	80.0	68.4	89.4
Purdue University	122.1	84.8	77.4	96.4
Texas A&M University	118.9	81.9	73.7	85.2
Virginia Tech	116.8	82.0	70.9	86.2
NC State University	116.1	83.9	70.4	88.5
Iowa State University	114.3	82.3	73.7	88.3
Univ Wisconsin-Madison	113.8	87.3	74.9	97.4
Univ Georgia	107.1	78.1	74.3	86.6

All faculty funding components are counted, including instruction, research, and extension.

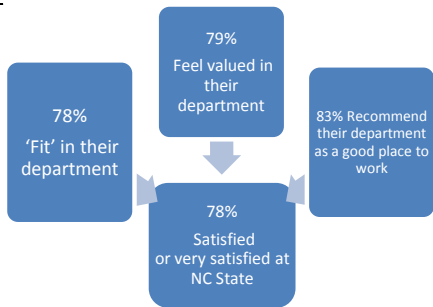
SCHs are department ownership, fall + spring, on-campus + DE.

Sorted by 2011 value. Year is academic year, faculty counted in fall semester. (EG fall 2010 + spring 2011 SCHs / fall 2010 faculty.)

National Academy Membership, 2010

Institution	IOM	NAE	NAS	Total
Cornell University	8	25	39	72
Wisconsin	8	19	42	69
Illinois	1	29	26	56
Univ of Minnesota	10	16	13	39
California-Davis	4	9	20	33
Georgia Tech	1	26	1	28
Maryland	1	13	14	28
Penn State	3	9	14	26
Ohio State	4	11	10	25
Florida	4	7	12	23
Purdue	1	18	2	21
NC State	1	10	9	20
Texas A&M	1	14	5	20
Virginia Tech	0	11	3	14
Iowa State	0	6	3	9
Univ Georgia	1	1	6	8
Michigan State	0	1	6	7

Faculty Well-Being Survey 2006



COACHE Survey (2008-09)

Survey population
 -Full-time, pre-tenure tenure-track; not in terminal year
 -Hired prior to Summer 2008

NC State faculty cited the following as the best and worst aspects about working at their institution as opposed to a comparable institution.

NCSU's Best Aspects	NCSU's Worst Aspects
- Geographic Location	- Lack of assistance for grant proposals
- Quality of Colleagues	- Compensation
- Sense of "fit"	- Quality of Grad Students
- Support of Colleagues	- Quality of Facilities

COACHE: Collaborative on Academic Careers in Higher Education