



NC STATE

THINK AND DO
THE EXTRAORDINARY

Administrative Leadership Meeting

Randy Woodson

Chancellor

Tuesday, January 14, 2025

Upcoming ALMs

Next Meeting

March 4

Topic TBD

Titmus

2024-25 Meeting Dates

- May 13, 2025



Climate and Sustainability Academy

- Launched December 2024
- Erin Seekamp appointed executive director; Chris Galik appointed deputy executive director

Fall Commencement

- Conferred more than 3,439 degrees
- 1,061 students graduated with honors
- Rashida Hodge served as commencement speaker



Capital Development Plan and Process

Office of Finance and Administration
Facilities Division

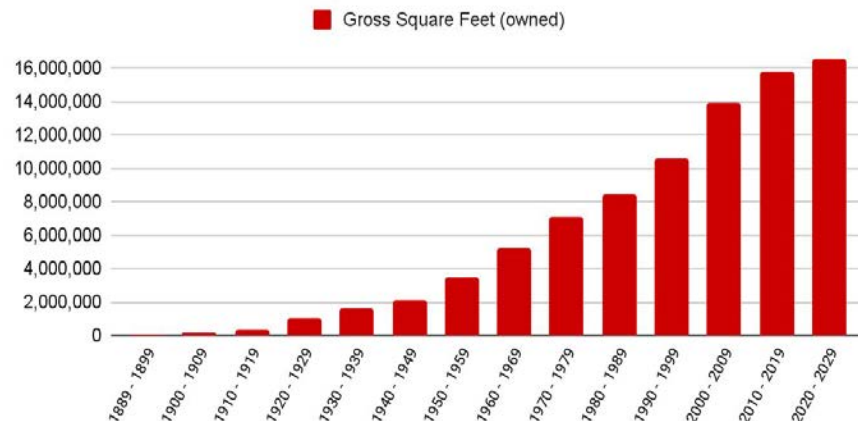
.....

Administrative Leadership Meeting
January 14, 2025



By the Numbers

Campus in Wake County



16.6M

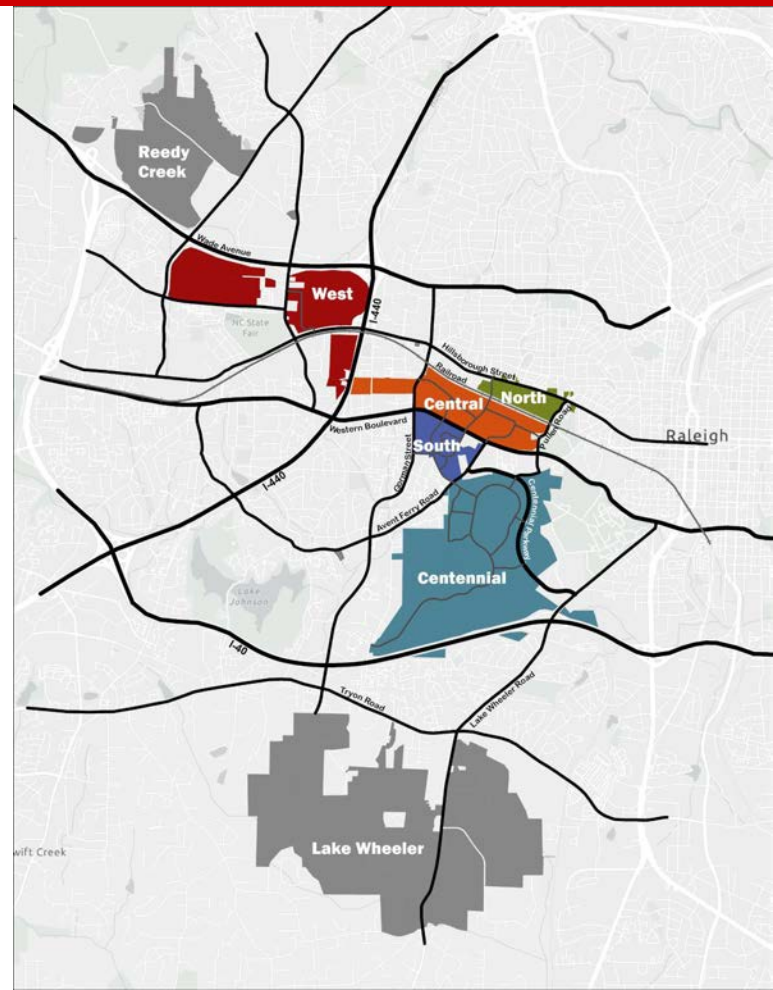
Gross Square Feet
(owned)

646

Buildings (owned)

4,733

Acres

















Physical Master Plan

Framing The Future Of Campus



3,500 people engaged,
providing over

23,000 items of
feedback



Approved by the
Board of Trustees

Campus Development Process

A Collaborative Effort

1

Principles

Inform and guide decisions about campus

2

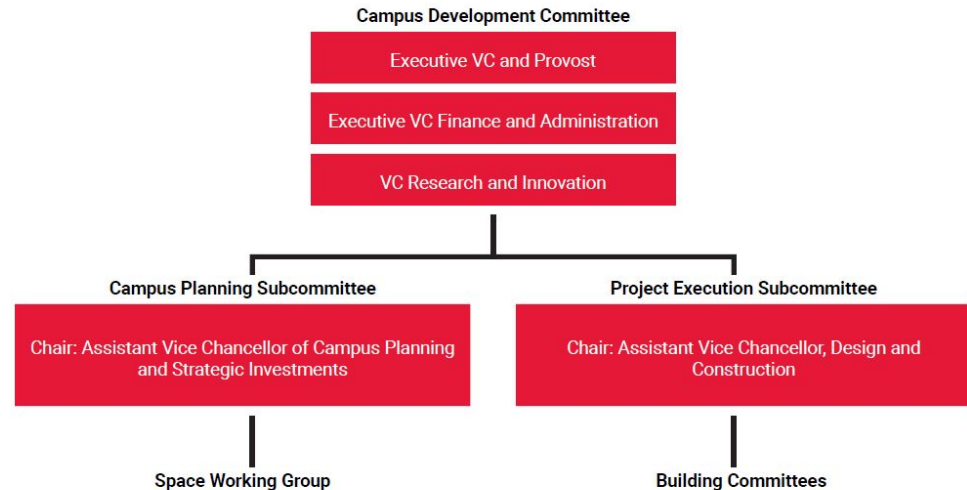
Processes

Ensure the most transformative projects are prioritized

3

Prototypes

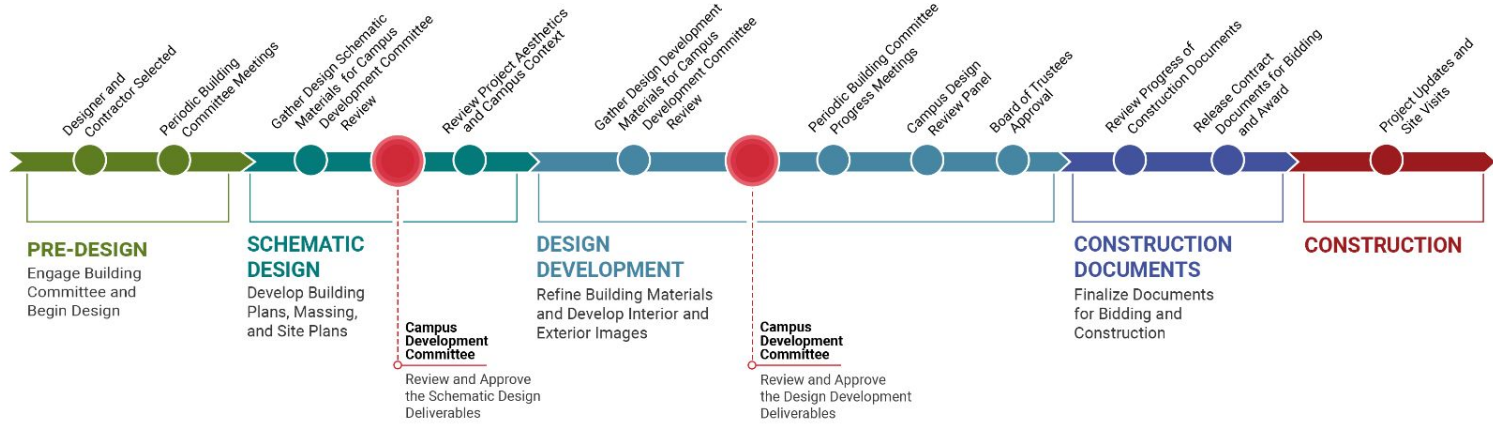
Inform the planning and design of new projects



PLANNING



EXECUTION



Define Needs

2024 Capital Needs Requests

38

Capital Needs
Requests
Submitted

SUBMITTED BY

19

Academic
Colleges
and Units

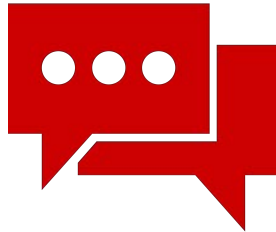


Develop Strategy

Urgent, Important, Emerging



Study



Discuss



Coordinate



Funding

Prioritize Projects

2025-2027 Capital Development Priorities



Space for the Department of Psychology

Building Renovation for the College of Education

Classroom Building for Engineering Growth

Critical Campus Infrastructure Repair and Expansion

Cates West Redevelopment

110 Classroom Maintenance and Renovation

Brooks and Kamphoefner Renovations

Thermal Utilities for the Toxicology Building

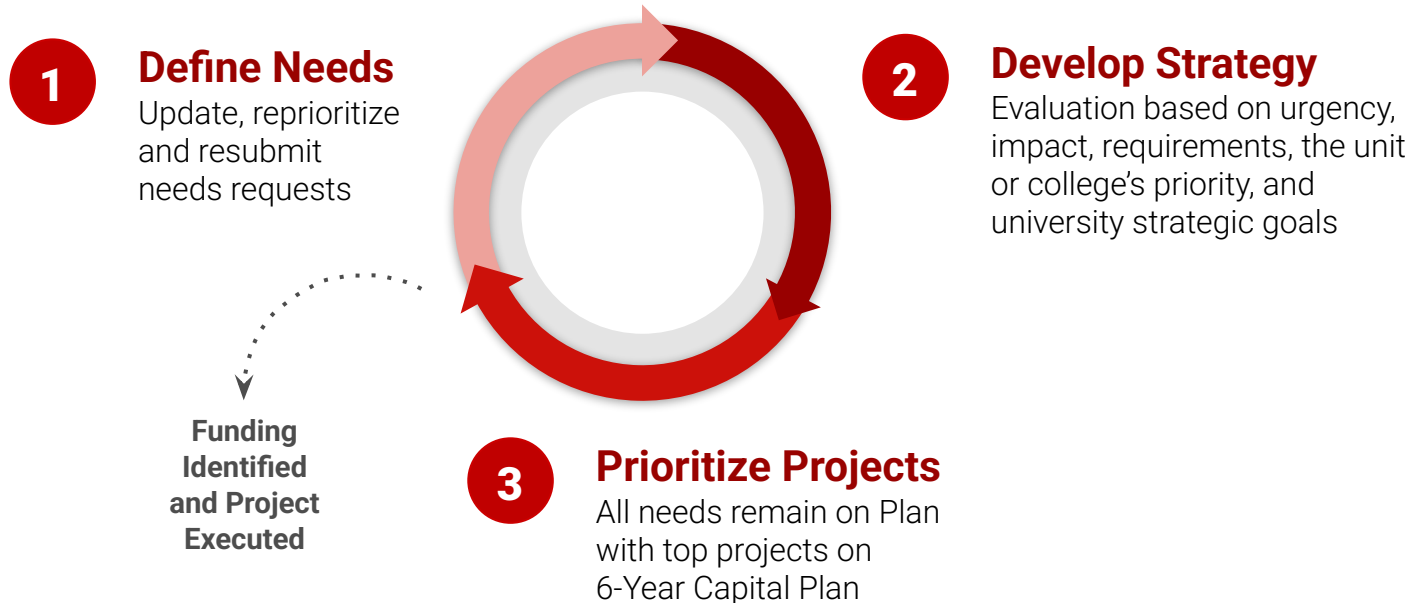
DELTA Testing Center Permanent Home

New Poole College of Management Building

Submitted
as part of
2025-2027
Six-Year
Capital Plan

The Way Ahead

Planning Cycle for Identifying and Prioritizing Needs



Get Involved

Planning Ahead

1 Physical Master Plan Orientation

Gain a broad understanding of the plan and its principles

2 Customer Support Teams

Discuss your top priorities and needs

3 Planning Resources

Engage Campus Planning and Strategic Investment and resources from the [Campus Development Committee](#)



