

Administrative Leadership Meeting

Randy Woodson
Chancellor

Tuesday, September 12, 2017

Upcoming ALMs

November 14, 2017	Strategic Plan Report Card	Titmus
January 9, 2018	Strategic Plan – Looking Forward	Titmus

Best Year Ever Video

https://www.youtube.com/watch?time_continue=1&v=PJZuhX1qZwg



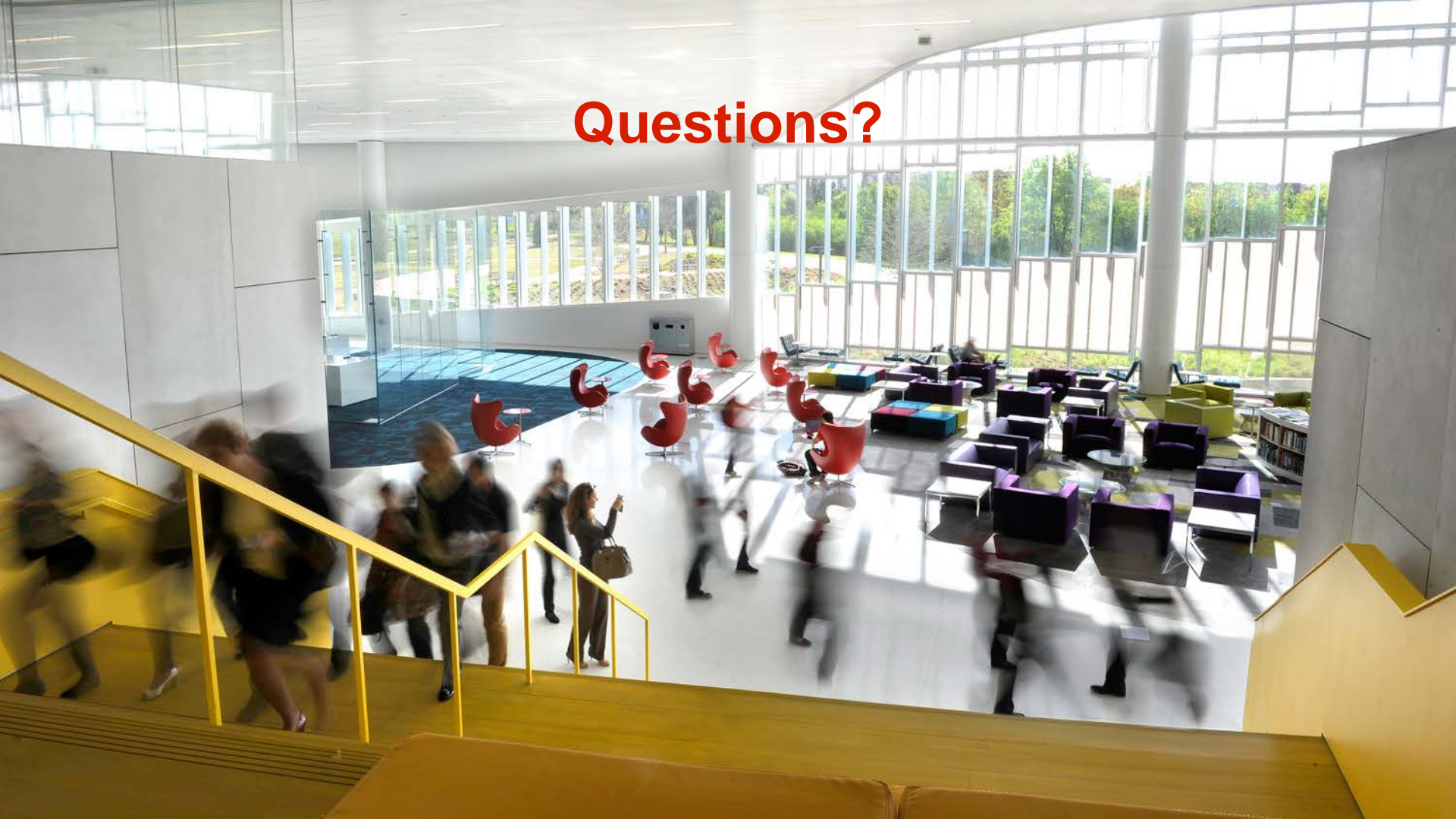
Historic Highs for Research

- \$407 million in extramural research awards
- \$489 million in research expenditures: 5% increase over 2015-16
- 15 startups
- 169 licenses and options executed
- 241 patents filed

2018 US News & World Report Rankings

Category	2018 Ranking	2017 Ranking
Best National University	81	92
Best Public University	33	38
Best College for Veterans	44	59
Best Value School	46	62
- Among Public Universities	5	8

Questions?



CAMPUS CAPACITY AND ASSESSMENT STUDY

ALM Presentation | September 12, 2017



Agenda

- Introductions
- What is the Campus Capacity and Assessment Study?
- Key Physical Planning Issues
- Guiding Principles and Strategies
- Application of Guiding Principles

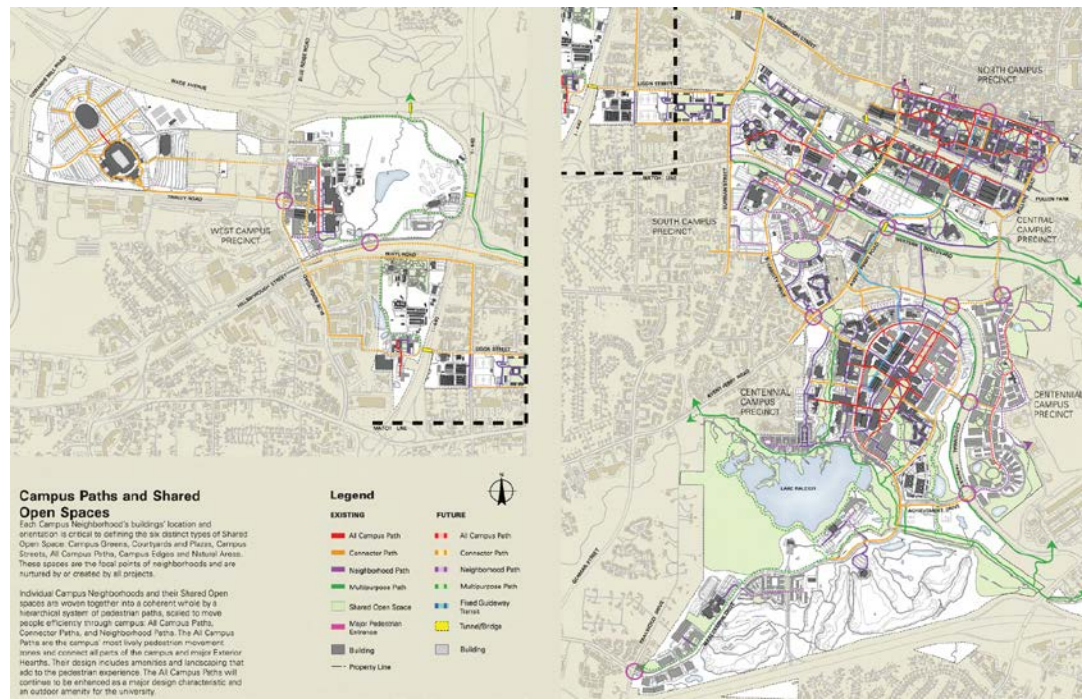
WHAT IS A CAMPUS CAPACITY AND ASSESSMENT STUDY?



It is not a Master Plan

It complements the existing 2014 Master Plan and will inform the next plan

- High-level overlay and guiding document
- Does not include detailed solutions





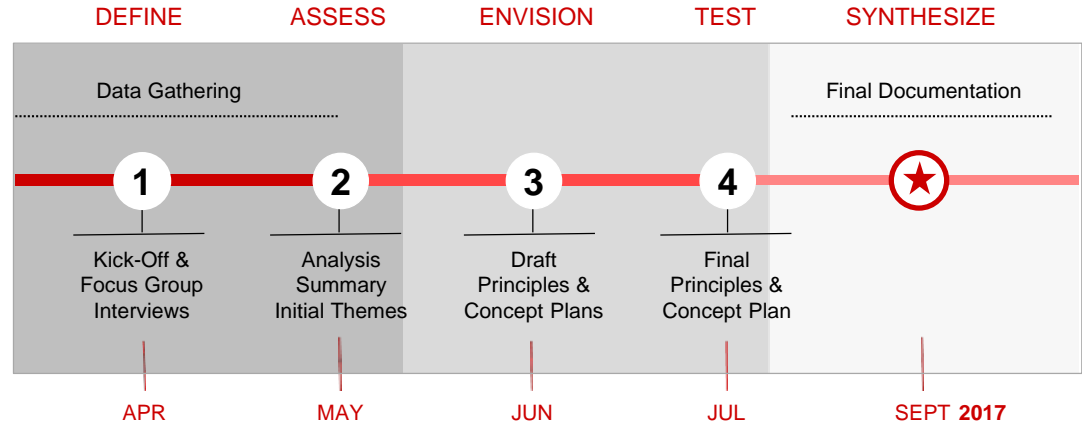
It is a process that provides multiple lenses to help us deliver the highest and best use of University resources

- Aligns the physical campus with its mission and programs
- Reinforces the Strategic Plan goals
- Responds to physical opportunities and challenges
- Engages diverse stakeholders in a rich dialog
- Challenges assumptions about facilities and development strategies
- Helps inform decision making related to the physical campus and projects

Engagement

- Athletics
- City of Raleigh
- Colleges
 - College of Agriculture and Life Sciences
 - College of Design
 - College of Education
 - College of Engineering
 - The Graduate School
 - College of Humanities and Social Sciences
 - College of Natural Resources
 - Poole College of Management
 - College of Sciences
 - College of Textiles
 - College of Veterinary Medicine
- Division of Academic and Student Affairs
 - Fraternity and Sorority Life
 - University Housing
 - University Recreation
- Office of the Executive Vice Chancellor and Provost
 - NCSU Libraries
- Finance and Administration
 - Campus Enterprises; Dining, Student Centers
 - College/Division Business Representatives
 - Environmental Health & Safety
 - Facilities
 - Real Estate and Development
 - Transportation
- Hillsborough Street Community Service Corporation
- Local Design Community
- Research, Innovation and Economic Development
 - Partnerships and Economic Development
- Students
- University Advancement
- University Council

Process and Schedule



Campus Capacity & Assessment Study

DEFINE KEY ISSUES

What are the issues and opportunities for the NC State Campus?



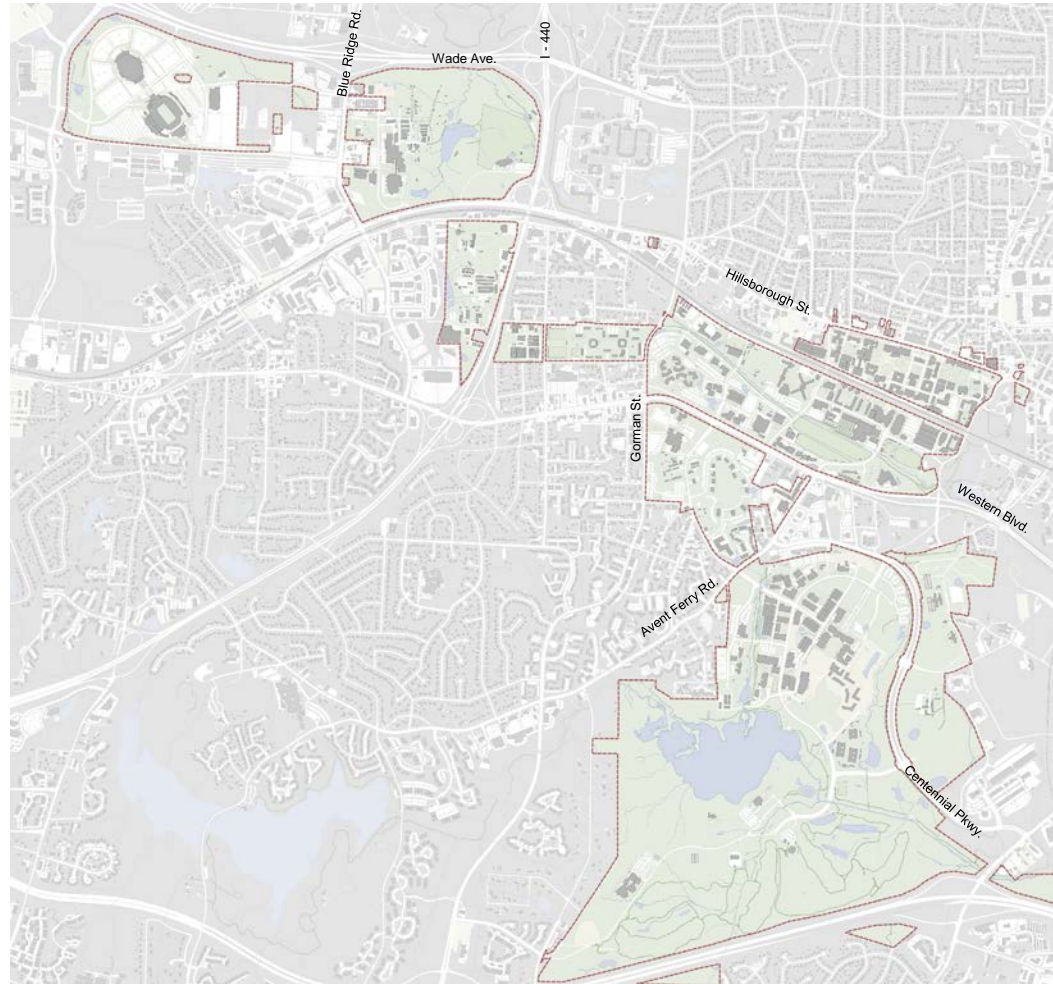
ESTABLISH GUIDING PRINCIPLES

What are the principles that will address these key issues and inform future development and decision making?



APPLY GUIDING PRINCIPLES

How can the guiding principles be applied to future decisions and opportunities?



KEY PHYSICAL PLANNING ISSUES

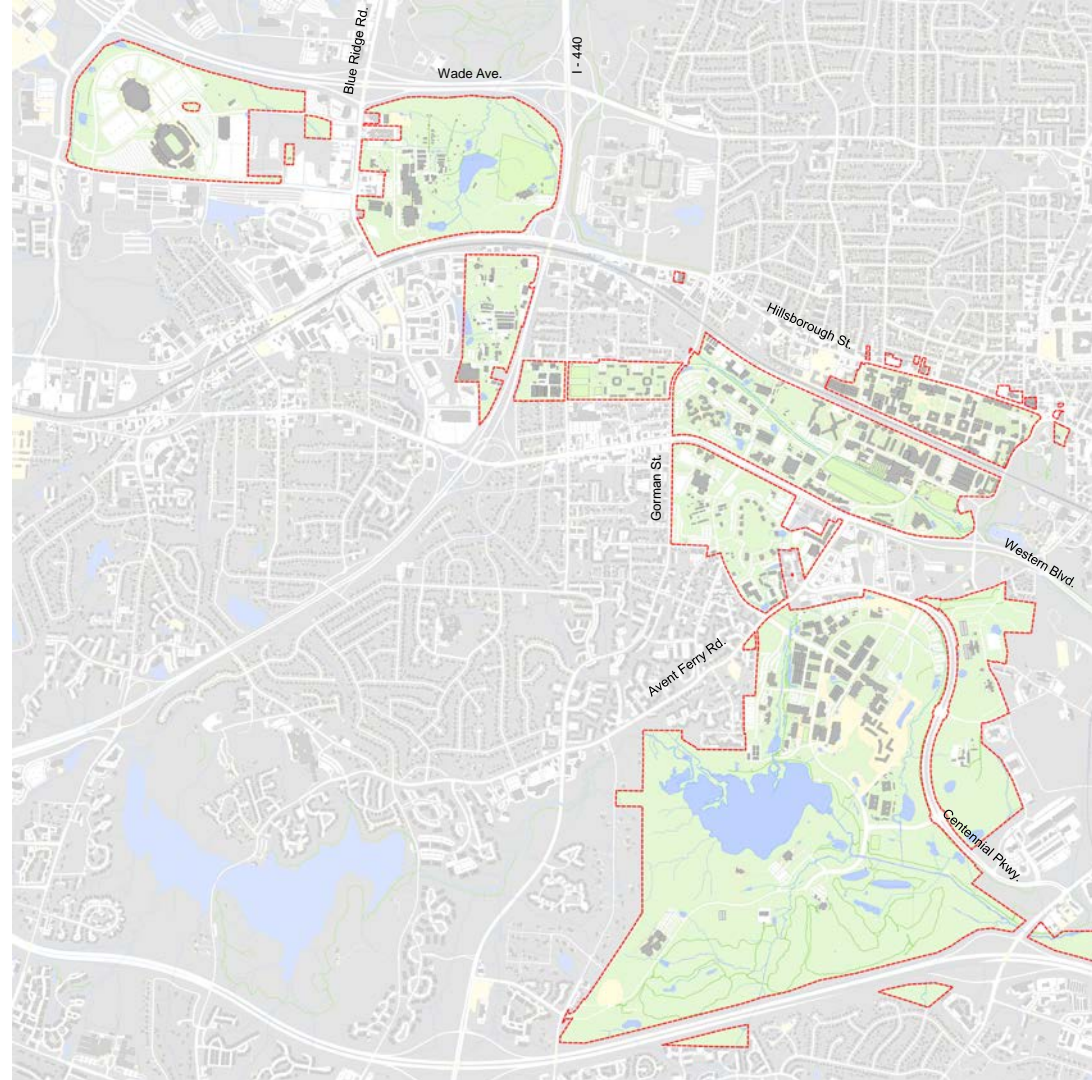
Key Issues

Physical

- Large campus
- Major roads and railroad tracks divide areas of campus
- Edges are inactive and lack consistent identity
- Non-contiguous land holdings

Programmatic

- Large, limited use/inactive land areas
- Four distributed academic cores
- Fragmentation of units
- Sprawling development
- Need to strengthen hubs



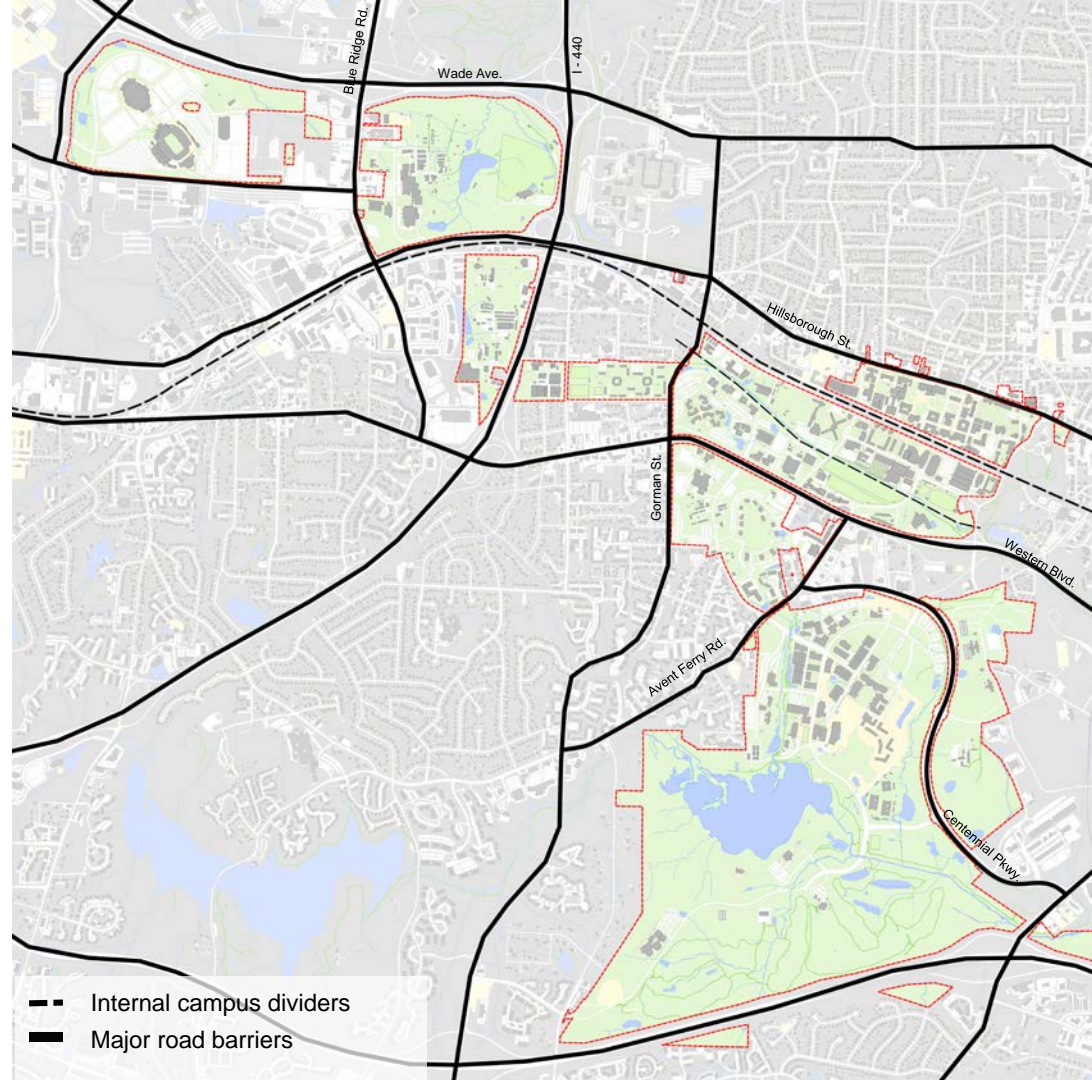
Key Issues

Physical

- Large campus
- Major roads and railroad tracks divide areas of campus
- Edges are inactive and lack consistent identity
- Non-contiguous land holdings

Programmatic

- Large, limited use/inactive land areas
- Four distributed academic cores
- Fragmentation of units
- Sprawling development
- Need to strengthen hubs



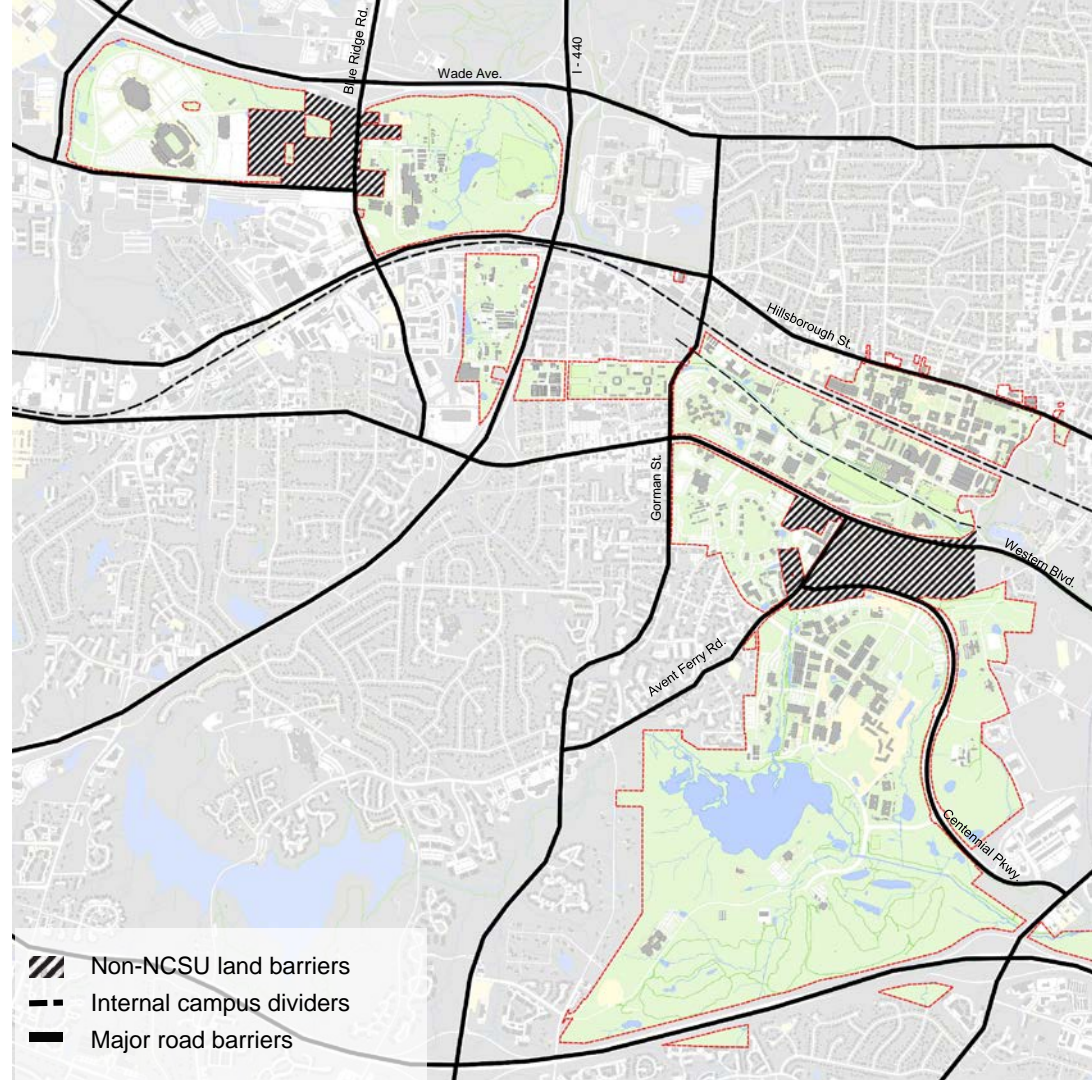
Key Issues

Physical

- Large campus
- Major roads and railroad tracks divide areas of campus
- Edges are inactive and lack consistent identity
- Non-contiguous land holdings

Programmatic

- Large, limited use/inactive land areas
- Four distributed academic cores
- Fragmentation of units
- Sprawling development
- Need to strengthen hubs



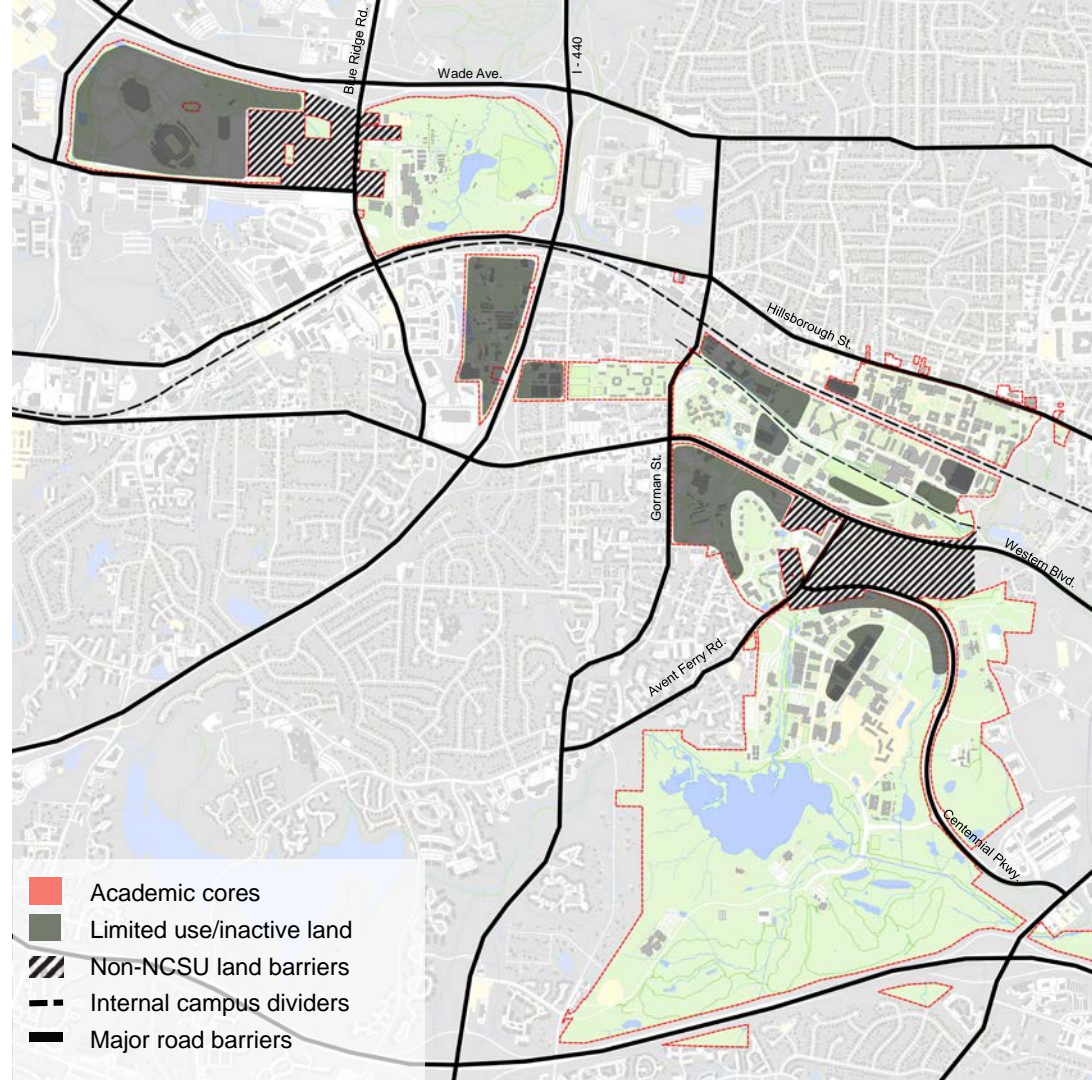
Key Issues

Physical

- Large campus
- Major roads and railroad tracks divide areas of campus
- Edges are inactive and lack consistent identity
- Non-contiguous land holdings

Programmatic

- Large, limited use/inactive land areas
- Four distributed academic cores
- Fragmentation of units
- Sprawling development
- Need to strengthen hubs



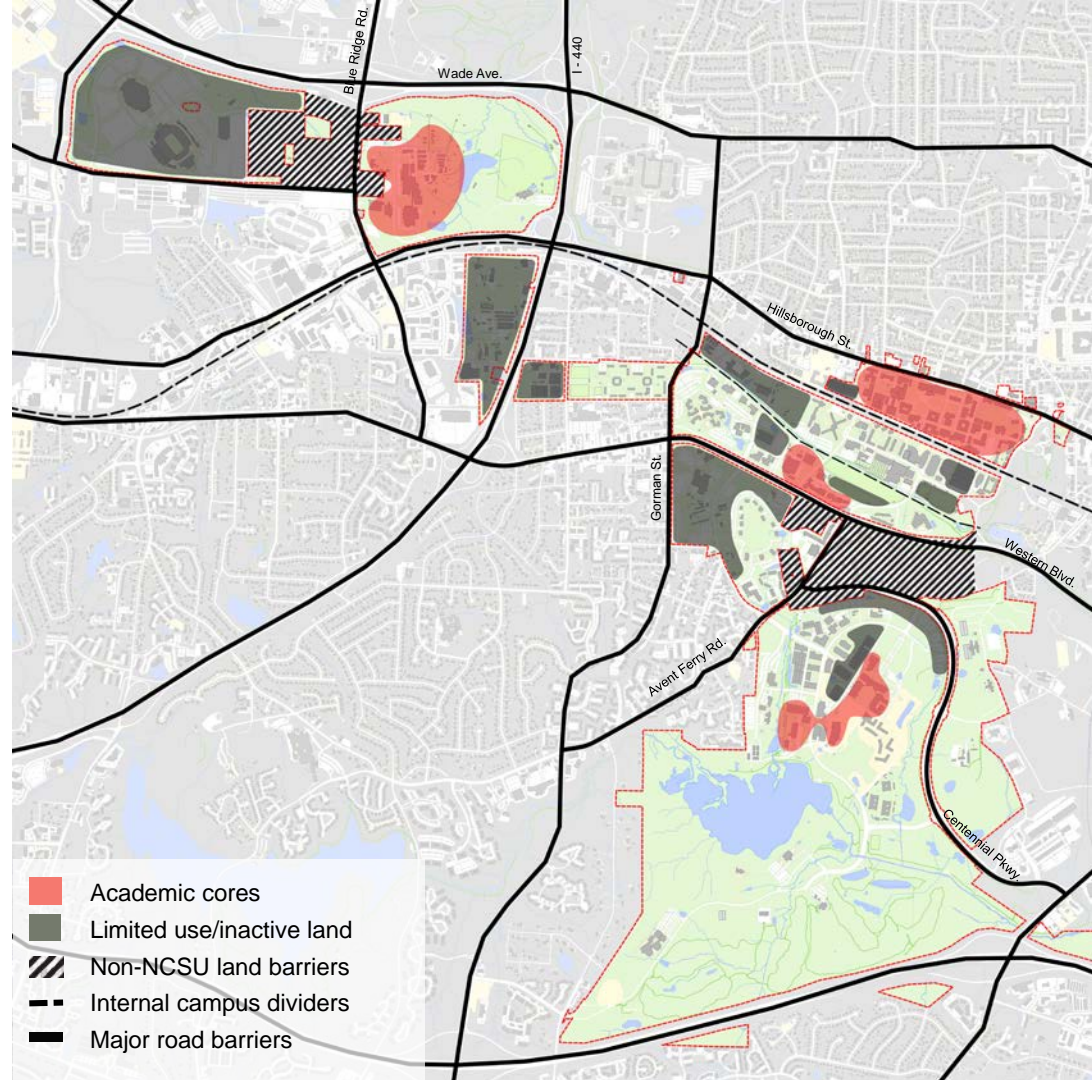
Key Issues

Physical

- Large campus
- Major roads and railroad tracks divide areas of campus
- Edges are inactive and lack consistent identity
- Non-contiguous land holdings

Programmatic

- Large, limited use/inactive land areas
- Four distributed academic cores
- Fragmentation of units
- Sprawling development
- Need to strengthen hubs



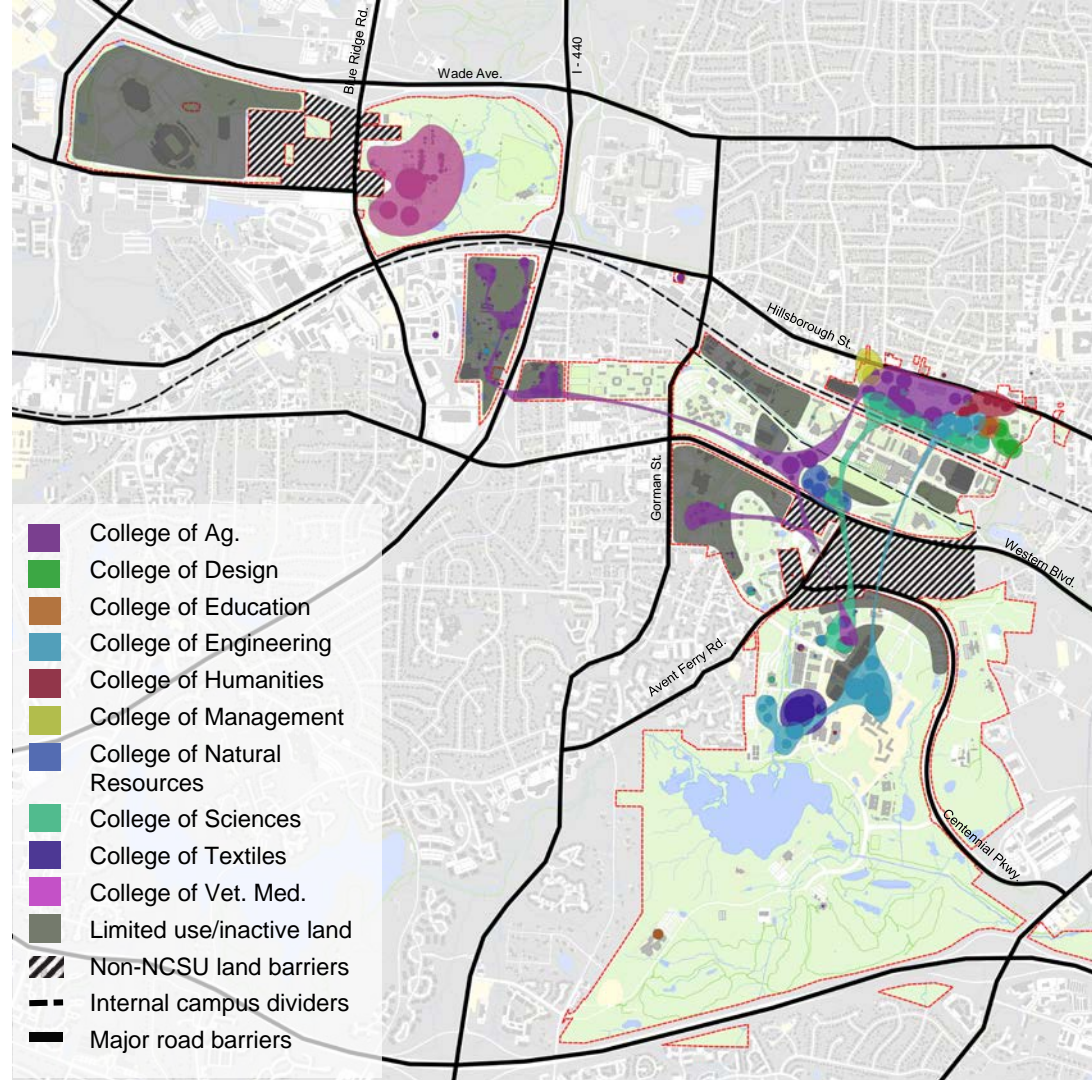
Key Issues

Physical

- Large campus
- Major roads and railroad tracks divide areas of campus
- Edges are inactive and lack consistent identity
- Non-contiguous land holdings

Programmatic

- Large, limited use/inactive land areas
- Four distributed academic cores
- Fragmentation of units
- Sprawling development
- Need to strengthen hubs



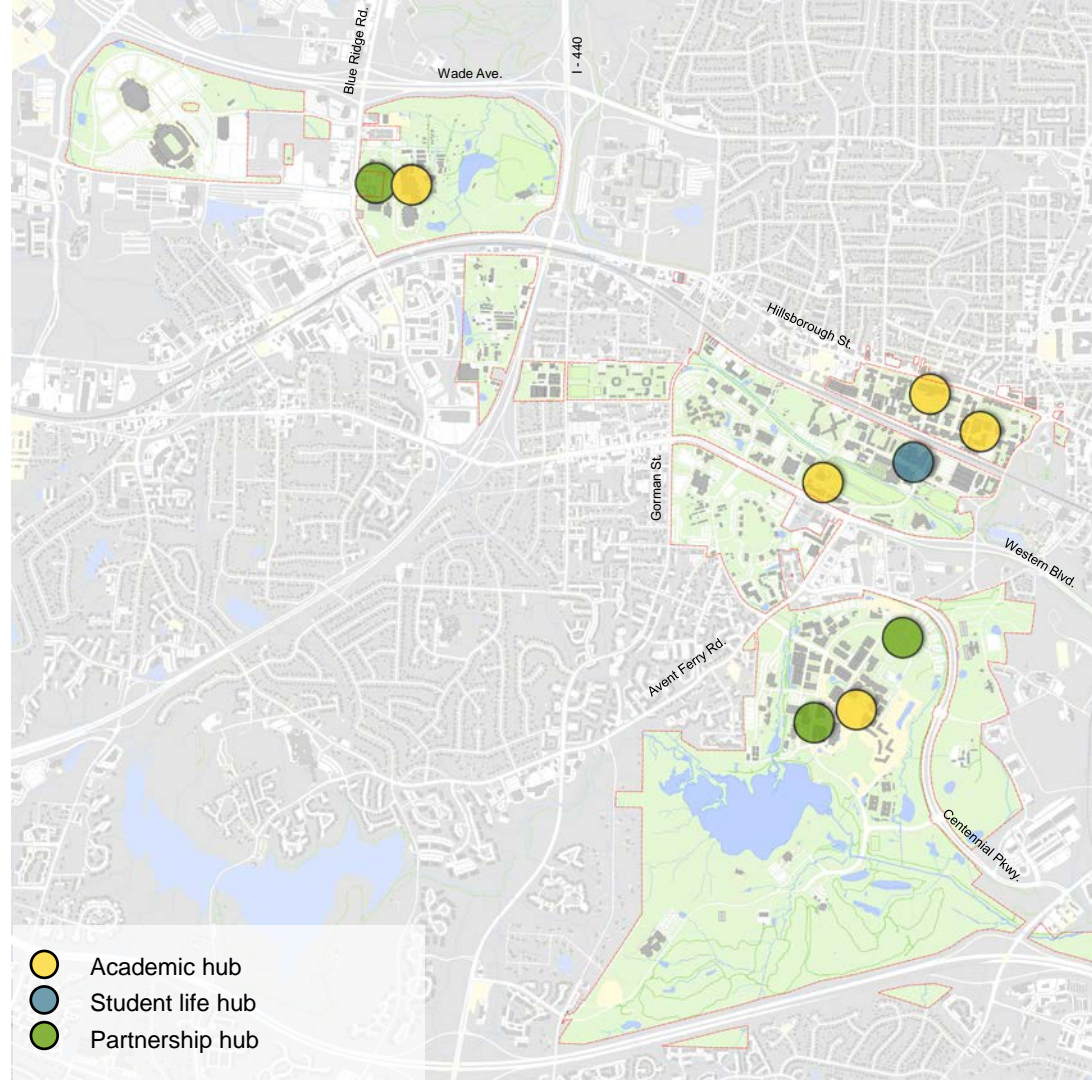
Key Issues

Physical

- Large campus
- Major roads and railroad tracks divide areas of campus
- Edges are inactive and lack consistent identity
- Non-contiguous land holdings

Programmatic

- Large, limited use/inactive land areas
- Four distributed academic cores
- Fragmentation of units
- Sprawling development
- Need to strengthen hubs



Key Issues

Physical

- Large campus
- Major roads and railroad tracks divide areas of campus
- Edges are inactive and lack consistent identity
- Non-contiguous land holdings

Programmatic

- Large, limited use/inactive land areas
- Four distributed academic cores
- Fragmentation of units
- Sprawling development
- Need to strengthen hubs

Guiding Principles



**Strengthen
Identity and Brand**



**Enhance Stewardship
of Campus Resources**



**Connect
the Campus**



**Re-prioritize
Circulation**



**Promote
Vibrancy**

PRINCIPLES & STRATEGIES



Strengthen Identity & Brand*

GUIDING PRINCIPLE

Strengthen the identity and brand of NC State by leveraging its location in the region, creating welcoming gateways for the surrounding communities, augmenting existing iconic spaces and buildings, and clarifying campus edges and gateways.



Campus identity



Gateways and edges



Iconic spaces and buildings



Iconic spaces and buildings



Strengthen Identity & Brand*

GUIDING PRINCIPLE

Strengthen the identity and brand of NC State by leveraging its location in the region, creating welcoming gateways for the surrounding communities, augmenting existing iconic spaces and buildings, and clarifying campus edges and gateways.

STRATEGIES

1. Create a consistent quality and character for all major gateways
2. Prioritize Western Boulevard gateways and streetscape for improvement
3. Engage Hillsborough Street with active uses and streetscape while creating a more welcoming, porous edge to the campus
4. Identify strategic partners to help enhance neighboring landholdings and streets that are critical to the University's mission, identity, interface, and connectivity



Enhance Stewardship of Campus Resources

GUIDING PRINCIPLE

Enhance campus stewardship by ensuring the highest and best use of land and resources, excellent teaching and research facilities, and quality of and connectivity between, the University's diverse landscapes.



Stewardship of existing resources



Restoration of Rocky Branch



Diverse, working landscapes



Enhance Stewardship of Campus Resources

GUIDING PRINCIPLE

Enhance campus stewardship by ensuring the highest and best use of land and resources, excellent teaching and research facilities, and quality of and connectivity between, the University's diverse landscapes.

STRATEGIES

1. Improve adjacency, utilization, and condition of facilities through strategic renovation, demolition, and new construction
2. Prioritize infill development to densify campus and promote collaboration and innovation
3. Enhance, connect, and create vibrant, iconic landscapes throughout campus
4. Incorporate working landscapes and visible stormwater management systems where appropriate throughout campus to support sustainable initiatives and educate the campus community
5. Capitalize on partnership opportunities to improve campus edges and programmatic connections between campuses and to deliver additional facilities in a financially sustainable manner



Connect the Campus

GUIDING PRINCIPLE

Advance the culture of collaboration and interdisciplinarity by improving programmatic adjacencies and mobility, and creating strong connections between University landholdings.



Pedestrian bridge on Centennial Campus



Connection across Western Boulevard concept



Free Expression Tunnel under the railroad tracks



Connect the Campus

GUIDING PRINCIPLE

Advance the culture of collaboration and interdisciplinarity by improving programmatic adjacencies and mobility, and creating strong connections between University landholdings.

STRATEGIES

1. Increase programmatic connections by strategically locating interdisciplinary facilities
2. Provide dedicated pedestrian, bike, and bus routes throughout campus
3. Provide direct and fast transit connections between campus precincts
4. Activate campus corridors and public streets to shorten perceived walking distances and to add vibrancy
5. Create a bridge between North and Central Precincts to mitigate topography, reducing travel time and distance
6. Connect Nazareth Street, Morrill Drive, and Broughton Drive to create a strong pedestrian path from Hillsborough Street to Centennial Campus
7. Enhance Western Boulevard pedestrian connections by adding key bridges, tunnels, or caps (i.e., tunnel top-surface requirements/amenities)



Re-Prioritize Circulation

GUIDING PRINCIPLE

Create a closer campus community between geographically-dispersed units by re-prioritizing modes of circulation on and around campus to provide a safe, healthy, and active campus supported by consistent and reliable transit. **Pedestrians > Bike > Bus > Vehicle**



Walkability



Bike friendly campus



Expanded transit opportunities



Conversion to pedestrian paths – 1911 Building



Re-Prioritize Circulation

GUIDING PRINCIPLE

Create a closer campus community between geographically-dispersed units by re-prioritizing modes of circulation on and around campus to provide a safe, healthy, and active campus supported by consistent and reliable transit. **Pedestrians > Bike > Bus > Vehicle**

STRATEGIES

1. Enhance on-campus pedestrian crossings
2. Eliminate/reduce surface parking in the campus core
3. Keep vehicular access and parking at campus edges
4. Encourage a 'park once' mentality by adjusting the parking management system
5. Support alternative means of transportation; improve bikeways and pedestrian pathways
6. Re-envision Cates Ave and redirect traffic south to remove vehicular congestion in an active pedestrian area
7. Encourage shared parking between different uses on Centennial Campus



Promote Vibrancy

GUIDING PRINCIPLE

Promote a vibrant campus by creating spaces for collaboration and gathering, concentrating activity and density, and ensuring a mix of uses in each precinct.



Collaboration space in Talley Student Union



Gathering at the Brickyard during the Solar Eclipse



Study and collaboration space in Hunt Library



Promote Vibrancy

GUIDING PRINCIPLE

Promote a vibrant campus by creating spaces for collaboration and gathering, concentrating activity and density, and ensuring a mix of uses in each precinct.

STRATEGIES

1. Export the energy of the Central Precinct to other parts of campus by blending uses and creating critical mass at key campus crossroads
2. Develop shared spaces and hubs to inspire community, collaboration, and innovation like Park Shops, Hunt Library, Talley Student Union, Carmichael Recreation Center, and Hillsborough Street
3. Renovate or build new interdisciplinary facilities that bring people together to collaborate, innovate, and address complex problems
4. Improve adjacencies and concentrate activity in strategic locations

Guiding Principles



Strengthen Identity and Brand



Enhance Stewardship of Campus Resources



Connect the Campus






Re-prioritize Circulation



Promote Vibrancy

APPLYING THE PRINCIPLES

How can we use the principles to weigh future decisions/opportunities?

Some strategies have a positive correlation with a principle , some a neutral correlation , and others a negative correlation . Future decisions should either positively influence a principle or be neutral to it. They should not be detrimental to or negatively impact any of the principles.



Strengthen Identity and Brand



Enhance Stewardship of Campus Resources



Connect the Campus

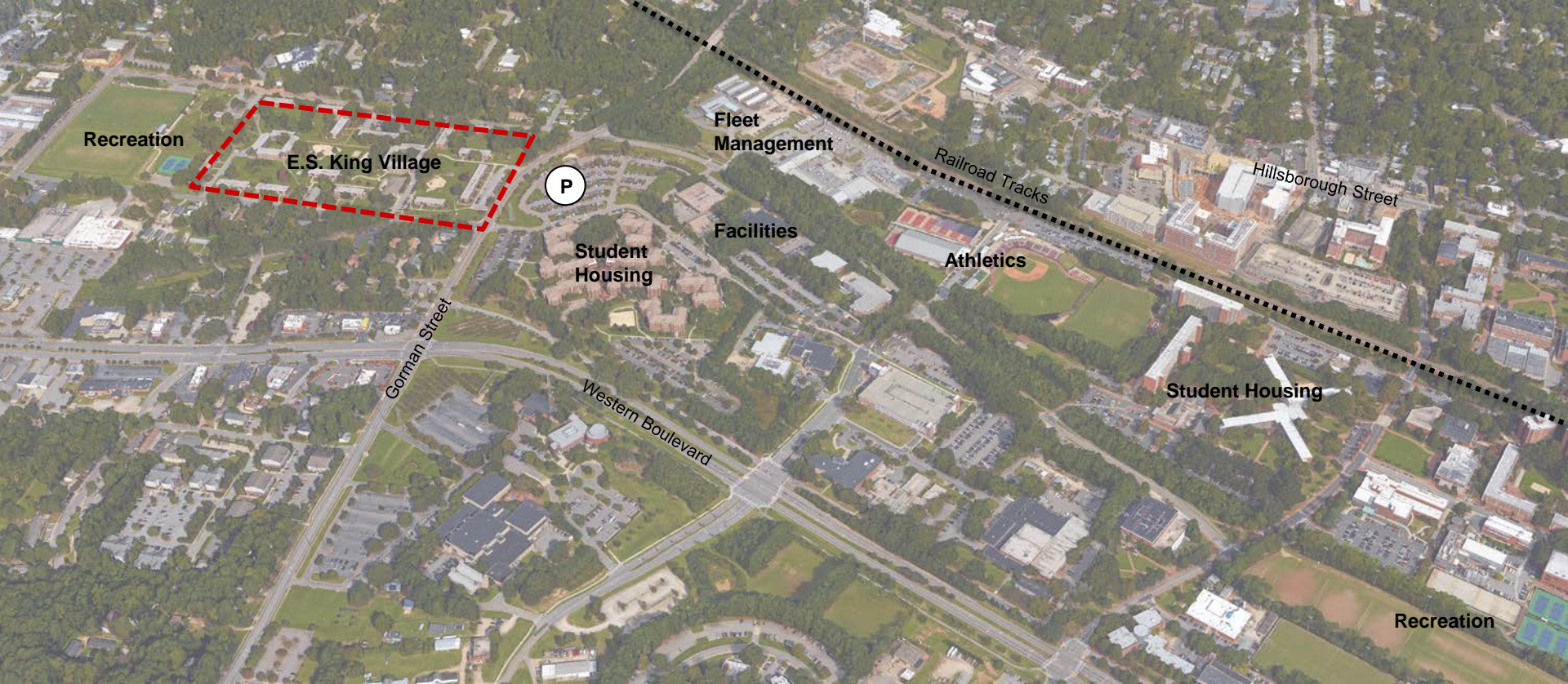


Re-prioritize Circulation

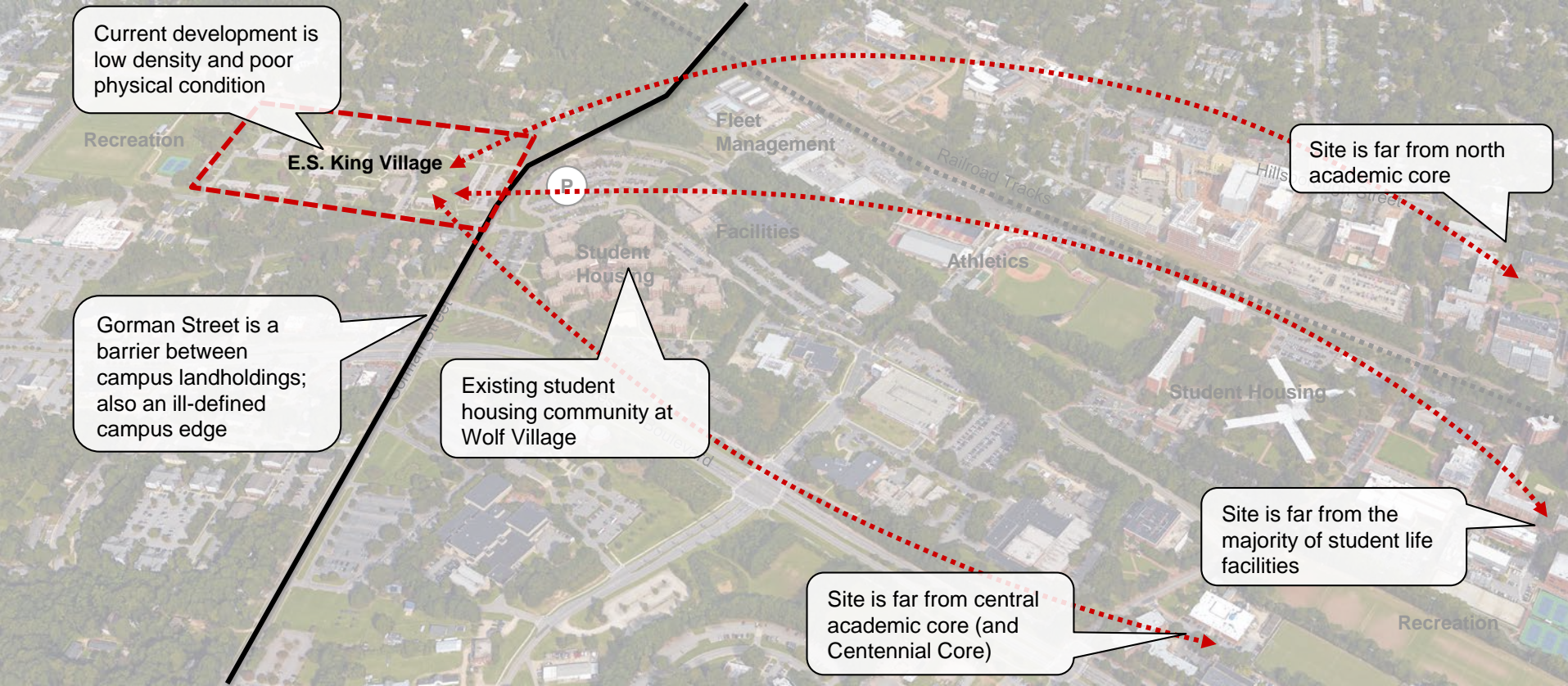


Promote Vibrancy

Applying the Principles: Redevelopment of E.S. King Village






Applying the Principles: Redevelopment of E.S. King Village



Applying the Principles: Redevelopment of E.S. King Village

A partner wants to redevelop E.S. King into high density student housing

 Positive  Neutral  Detrimental



Strengthen Identity and Brand



Enhance Stewardship of Campus Resources



Connect the Campus






Re-prioritize Circulation



Promote Vibrancy

Applying the Principles: Redevelopment of E.S. King Village

A partner wants to redevelop E.S. King into high density student housing

 Positive  Neutral  Detrimental



Strengthen Identity and Brand



Enhance Stewardship of Campus Resources



Connect the Campus






Re-prioritize Circulation



Promote Vibrancy

Applying the Principles: Redevelopment of E.S. King Village

A partner wants to redevelop E.S. King into high density student housing

 Positive  Neutral  Detrimental



Strengthen Identity and Brand



Enhance Stewardship of Campus Resources



Connect the Campus






Re-prioritize Circulation



Promote Vibrancy

Applying the Principles: Redevelopment of E.S. King Village

A partner wants to redevelop E.S. King into high density student housing

 Positive  Neutral  Detrimental



Strengthen Identity and Brand



Enhance Stewardship of Campus Resources



Connect the Campus





Re-prioritize Circulation



Promote Vibrancy

Applying the Principles: Redevelopment of E.S. King Village

A partner wants to redevelop E.S. King into high density student housing

 Positive  Neutral  Detrimental



Strengthen Identity and Brand



Enhance Stewardship of Campus Resources



Connect the Campus





Re-prioritize Circulation



Promote Vibrancy

Applying the Principles: Redevelopment of E.S. King Village

A partner wants to redevelop E.S. King into high density student housing

 Positive  Neutral  Detrimental



Strengthen Identity and Brand



Enhance Stewardship of Campus Resources



Connect the Campus



Re-prioritize Circulation



Promote Vibrancy



Guiding Principles

Redevelopment of E.S. King Village with high density student housing



Strengthen Identity and Brand

Creates stronger campus edge and identity along Gorman Street



Enhance Stewardship of Campus Resources

Spreads campus resources; reduces adjacency and the opportunity for density in the campus core



Connect the Campus

Further separates land holdings by placing a large groups of students across a physical campus barrier (Gorman Street)



Re-prioritize Circulation

Removes student parking from the campus core; requires more reliable transit to move students safely around campus

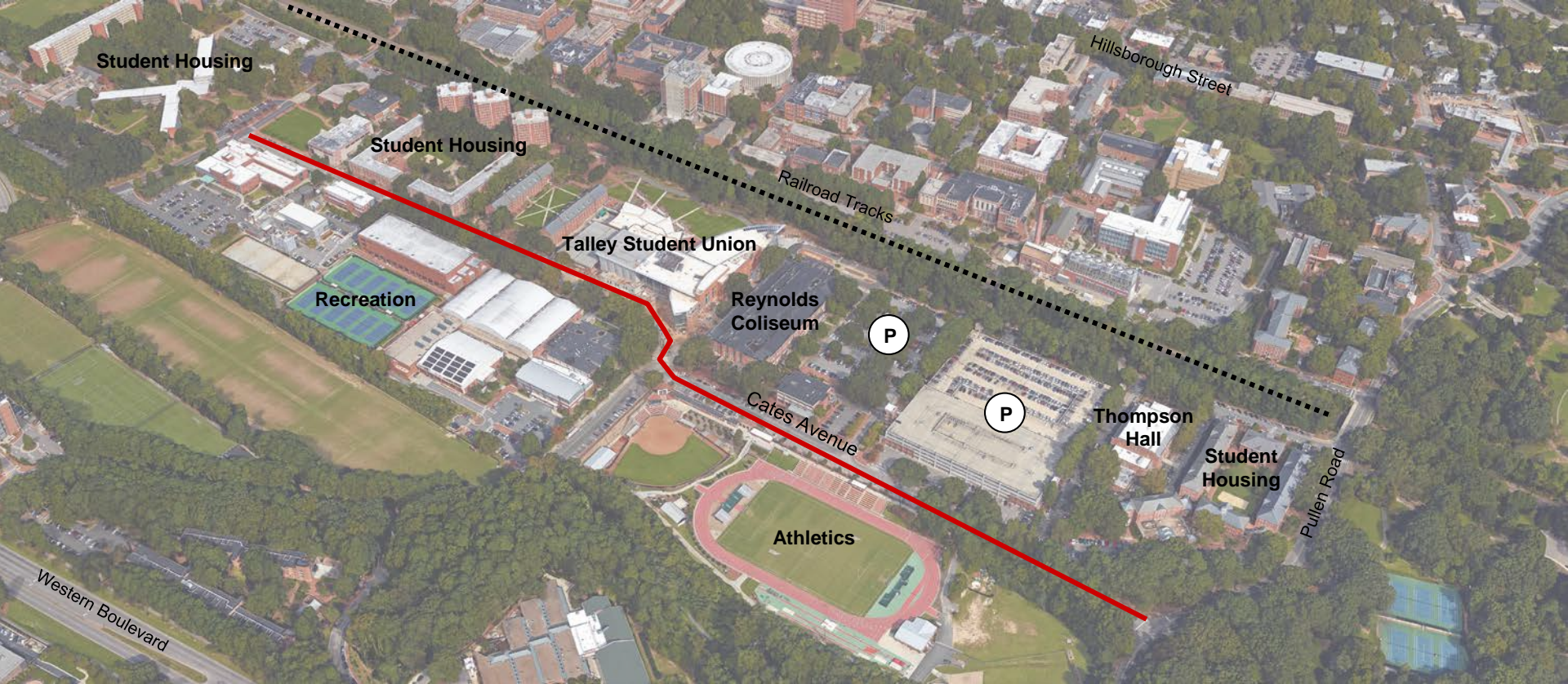


Promote Vibrancy

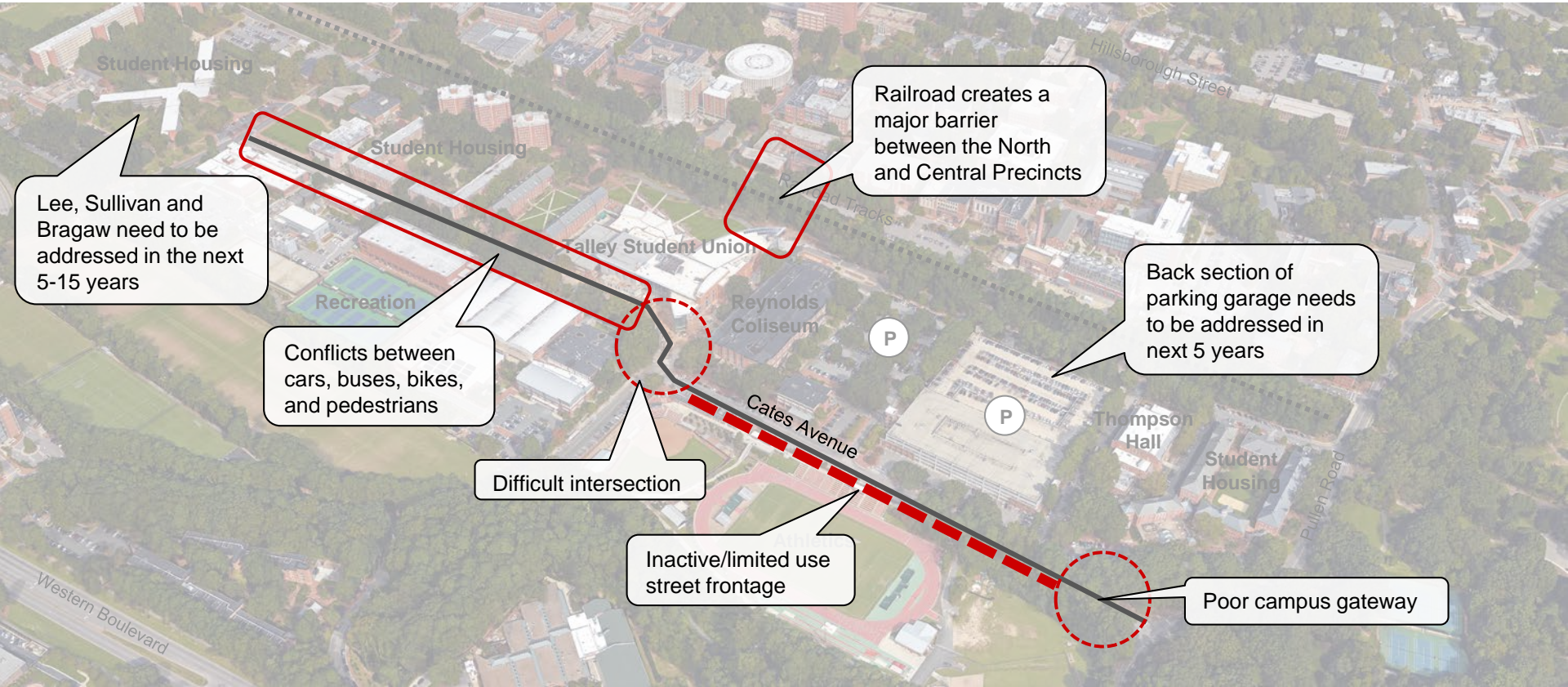
Adds vibrancy and critical mass to E.S. King site, but removes activity and vibrancy from campus core



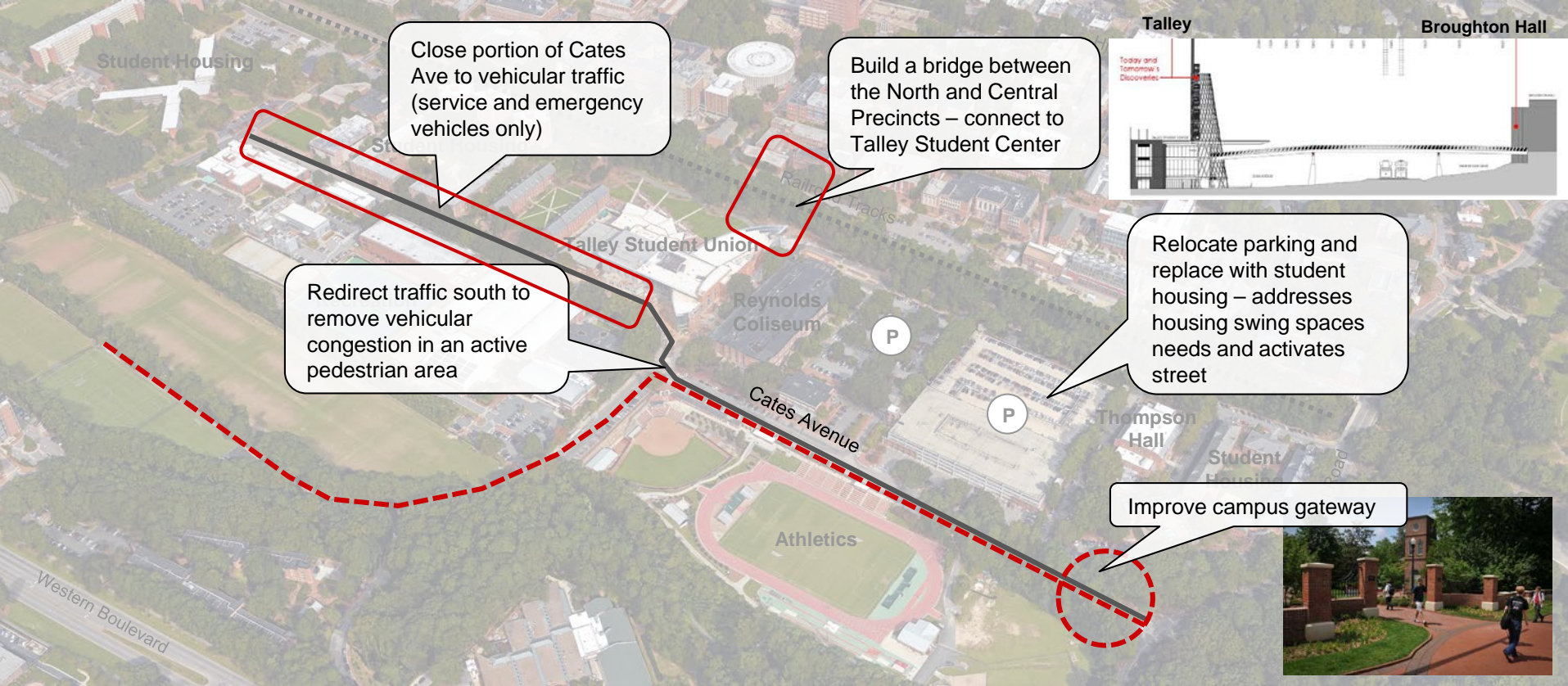
Applying the Principles: Cates Avenue Corridor



Applying the Principles: Cates Avenue Corridor – Identify Key Issues



Applying the Principles: Cates Avenue Corridor – Explore Possible Solutions

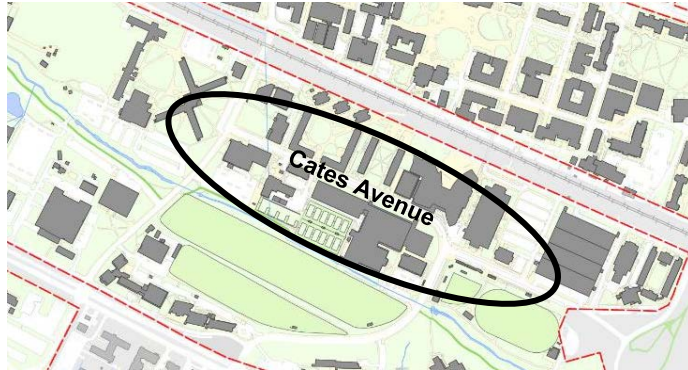


Applying the Principles: Cates Avenue Corridor – Explore Possible Solutions

Existing Cates Avenue

Two-way vehicular traffic

Parking on both sides of the street



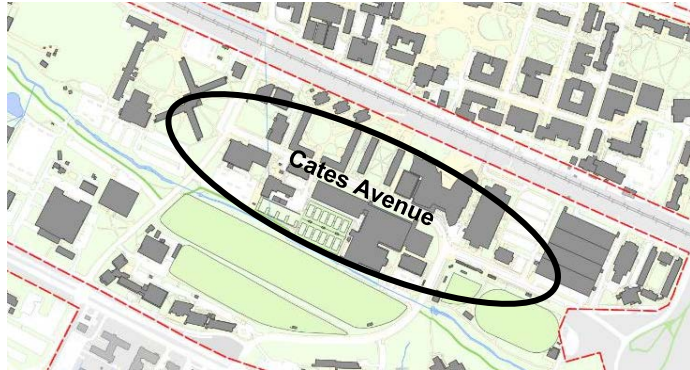
Applying the Principles: Cates Avenue Corridor – Explore Possible Solutions

Incorporate the NC State identity




Close a portion of Cates Ave to vehicular traffic
(service and emergency vehicles only)

Incorporate stormwater management into streetscape

Possible Future Cates Avenue



Applying the Principles: Re-envision the Cates Avenue Corridor

 Positive  Neutral  Detrimental



Strengthen Identity and Brand



Enhance Stewardship of Campus Resources



Connect the Campus






Re-prioritize Circulation



Promote Vibrancy

Applying the Principles: Re-envision the Cates Avenue Corridor

 Positive  Neutral  Detrimental



Strengthen Identity and Brand



Enhance Stewardship of Campus Resources



Connect the Campus





Re-prioritize Circulation



Promote Vibrancy

Applying the Principles: Re-envision the Cates Avenue Corridor

 Positive  Neutral  Detrimental



Strengthen Identity and Brand



Enhance Stewardship of Campus Resources



Connect the Campus






Re-prioritize Circulation



Promote Vibrancy

Applying the Principles: Re-envision the Cates Avenue Corridor

 Positive  Neutral  Detrimental



Strengthen Identity and Brand



Enhance Stewardship of Campus Resources



Connect the Campus





Re-prioritize Circulation



Promote Vibrancy

Applying the Principles: Re-envision the Cates Avenue Corridor

 Positive  Neutral  Detrimental



Strengthen Identity and Brand



Enhance Stewardship of Campus Resources



Connect the Campus





Re-prioritize Circulation



Promote Vibrancy

Applying the Principles: Re-envision the Cates Avenue Corridor

 Positive  Neutral  Detrimental



Strengthen Identity and Brand



Enhance Stewardship of Campus Resources



Connect the Campus



Re-prioritize Circulation



Promote Vibrancy



Guiding Principles

Re-envision the Cates Avenue Corridor

**Strengthen
Identity and Brand**

Makes a favorite part of campus more recognizable; student activity corridor with an opportunity to further incorporate the NC State identity

**Enhance Stewardship
of Campus Resources**

Adds higher density and better utilization of land resources; Incorporates stormwater management into streetscape

**Connect
the Campus**

Connects campus land holdings with a new bridge that mitigates topography reducing travel time and distance; better programmatic connections between student service facilities

**Re-prioritize
Circulation**

Increases pedestrian safety; remove cars and parking from active pedestrian and bike corridor on campus

**Promote
Vibrancy**

Adds greater vibrancy and critical mass to a campus hub with the opportunity to activate ground floors and increase number of places for collaboration and gathering



NEXT STEPS



Next Steps

Complete Capacity Study Process (September – October)

- Receive feedback from ALM group
- Finalize content and deliverables

Implementation of Capacity Study

- Evaluate ideas and projects through this lens
- Ensure the highest and best use of campus resources